

LOOX5

HÄFELE

**Kitchen LED
Lighting Kits.**

Intelligent light, intelligently solved.

Häfele Connect is the new system for intelligent and wireless light control, creating the perfect atmosphere for many different situations with light.

The Loox5 LED system offers optimum solutions for any requirement. With Häfele Connect, you can connect and control all components centrally and design the light effects to suit the occasion. Control is effortless using a smartphone, tablet, remote control or wireless bluetooth wall switch. The Häfele Connect app connects itself to the Connect Mesh via Bluetooth.

Häfele Connect provides a comprehensive range of control options, including control of the light colour with RGB lights or adjustment of the colour temperature with multi white lights. Different lights can be grouped together, allowing many scenarios to be stored and called up with a simple finger press. Simple and elegant.



HÄFELE

LOX5

DOWNLIGHTS.

DOWNLIGHT MULTI-WHITE 2 piece kit, white finish



	Cat. No.
	450.72.760

Packing: 1 Kit



Supplied with:

- > 2 Loox5 2091 downlight (Multi-White)
- > 2 Loox5 2091 downlight surface ring
- > 1 Loox5 driver 12V 20W with 2 m lead and plug
- > 1 Loox5 6-way distributor Multi-White
- > 1 Loox switch on-off touch free, dimmer
- > 1 Loox switch housing
- > 1 2 m lead for switch
- > 2 Multi-white leads for lights

DOWNLIGHT MULTI-WHITE 3 piece kit, white finish



	Cat. No.
	450.72.761

Packing: 1 Kit



Supplied with:

- > 3 Loox5 2091 downlight (Multi-White)
- > 3 Loox5 2091 downlight surface ring
- > 1 Loox5 driver 12V 20W with 2 m lead and plug
- > 1 Loox5 6-way distributor Multi-White
- > 1 Loox switch on-off touch free, dimmer
- > 1 Loox switch housing
- > 1 2 m lead for switch
- > 3 Multi-white leads for lights

STRIP LIGHTS.

5 METRE MULTI-WHITE STRIP LIGHT KIT



Cat. No.

450.72.762

Packing: 1 Kit



Supplied with:

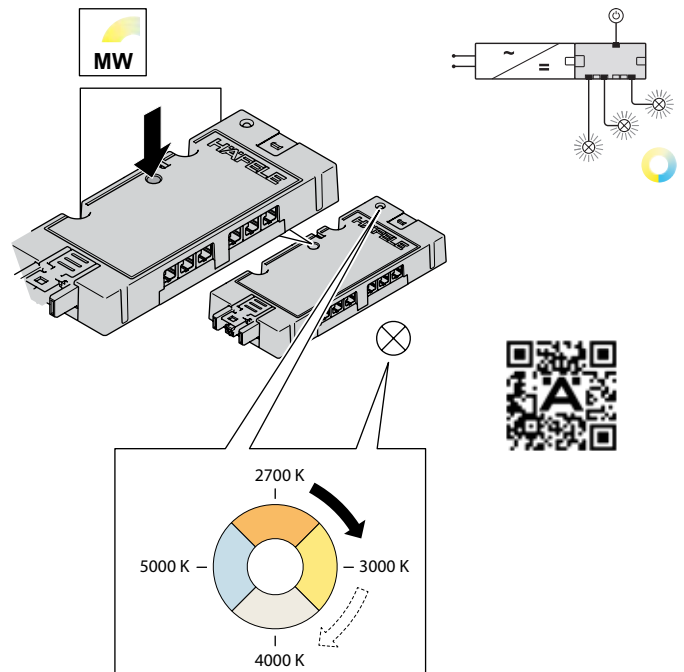
- > 2 Alloy 2500 mm profile
- > 1 Pair of end caps
- > 1 Loox5 2070 strip light (9.6 W/m)
- > 1 Loox5 driver 12V 60W with 2 m lead and plug
- > 1 Loox5 6-way distributor Multi-White
- > 1 Loox switch on-off touch free, dimmer
- > 1 Loox switch housing
- > 1 2 m lead for switch



Note:

Four permanently adjustable light colours (2700K, 3000K, 4000K, 5000K).

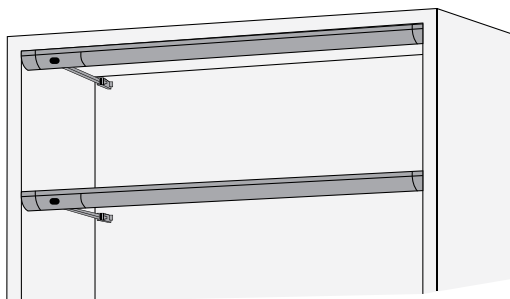
The pre-selection is made using the mode button on the distributor.





DRAWER LIGHT.

DRAWER LIGHT



Drawer cabinet width (mm)	Number of drawers		
	2	3	4
450	–	–	450.72.763
600	450.72.765	450.72.764	–
800	–	450.72.766	–
900	450.72.768	450.72.767	–

Packing: 1 Kit



Supplied with:

- > Aluminium profile; silver anodised
- > Diffuser; milky
- > End cap set and mounting kit
- > Loox5 2062 LED light strip (4.8 W/m)
- > Loox5 driver 12 V 20 W with 2 m lead and plug
- > Loox5 6-way distributor
- > Loox5 drawer front sensor switch

ACCESSORIES.

HÄFELE CONNECT MESH 6-WAY DISTRIBUTOR With switching function



	Cat. No.
	850.00.042

Packing: 1 Piece

HÄFELE LOOX5 MULTI-WHITE ADAPTER For Häfele Connect Mesh 6-way distributor



	Cat. No.
	833.95.745

Packing: 1 Piece

HÄFELE CONNECT MESH REMOTE CONTROL



	Cat. No.
	850.00.040

Packing: 1 Piece



Note:
Please order Häfele Connect Mesh 6-way distributor separately.
Please order 2 replaceable CR2032 button cell lithium batteries
(2 x 002.99.032) separately.

HÄFELE CONNECT MESH PUSH BUTTON Wall mounted



	Cat. No.
	850.00.041

Packing: 1 Piece



Note:
Please order Häfele Connect Mesh 6-way distributor separately
Please order 1 replaceable CR2430 button cell lithium battery
(1 x 002.99.034) separately.

HÄFELE CONNECT MESH FURNITURE SWITCH



	Cat. No.
	850.00.952

Packing: 1 Piece



Note:
Please order Häfele Connect Mesh 6-way distributor separately.
Please order battery separately 002.99.032. (CR2032 button
cell lithium battery).



HÄFELE

KITCHEN LED LIGHTING KITS - 12.22

Häfele Australia Pty. Ltd. | 8 Monterey Road | Dandenong | Victoria 3175
Phone: 1300 659 728 | **Fax:** (03) 9212 2001 | **Email:** info@hafele.com.au | www.hafele.com.au

Häfele New Zealand Ltd. | 16 Accent Drive | East Tamaki | Auckland 2013
Phone: 0800 442 335 | **Email:** info@hafele.co.nz | www.hafele.co.nz

HÄFELE LOCATIONS:

Australia | MELBOURNE | SYDNEY | NEWCASTLE | BRISBANE | ADELAIDE | LAUNCESTON | HOBART | PERTH
New Zealand | AUCKLAND | WELLINGTON | CHRISTCHURCH